

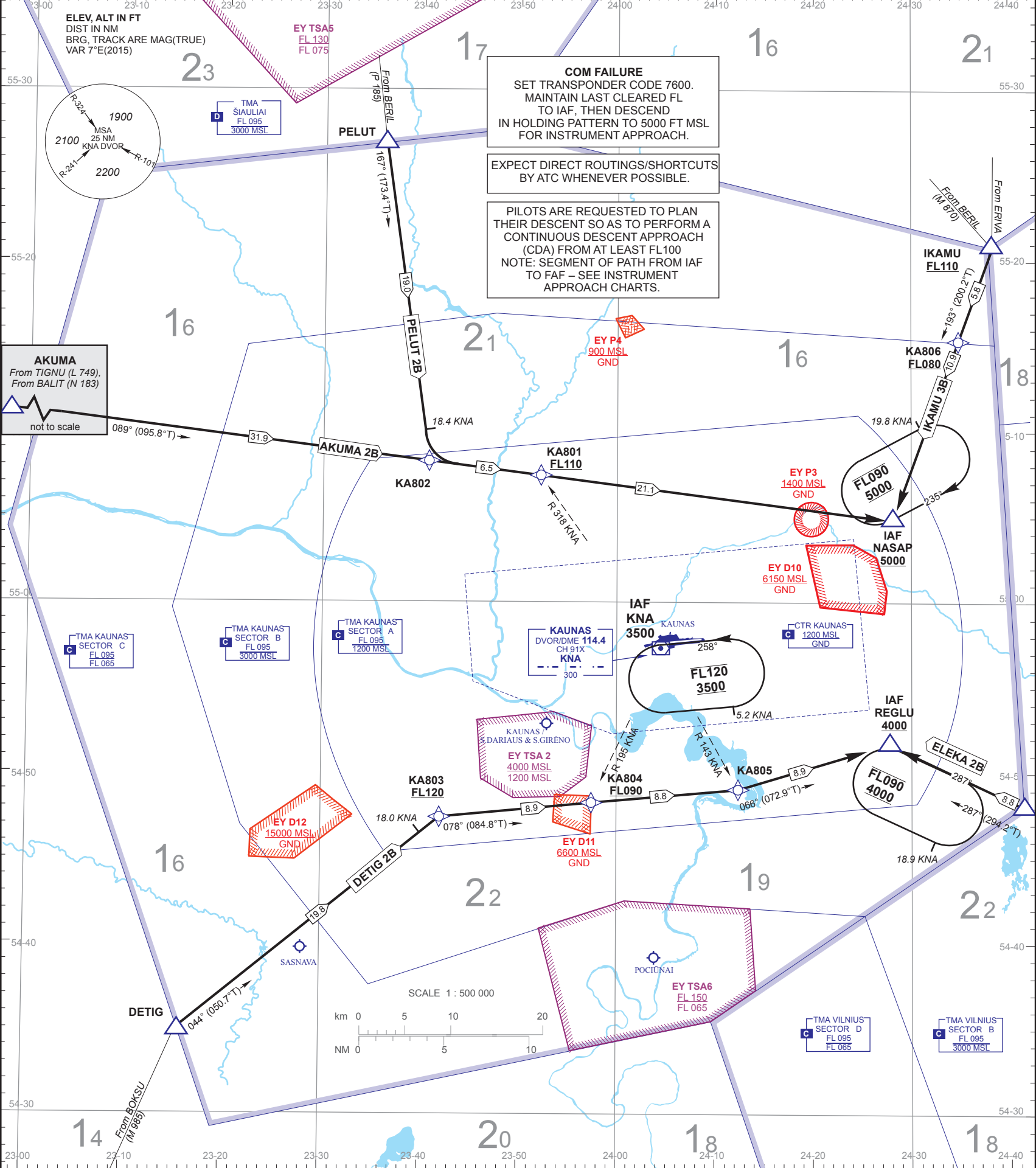
RNAV (GNSS, VOR/DME) OVERLAY
STANDARD ARRIVAL CHART
INSTRUMENT (STAR) - ICAO

TRANSITION ALTITUDE 5000
SPEED RESTRICTION TMA KAUNAS
MAX IAS 250 KT below FL100.
MAX IAS 230 KT at all IAFs.

TWR 124.200
118.500
ATIS 129.050

KAUNAS
RWY 26

AKUMA 2B, DETIG 2B,
ELEKA 2B, IKAMU 3B, PELUT 2B



STANDARD INSTRUMENT ARRIVAL (STAR) ROUTES RWY 26

STAR NAME	ROUTE	FL/ALTITUDE RESTRICTIONS
AKUMA 2B	From AKUMA on track 089° proceed to IAF NASAP.	Cross R-318 KNA at FL110 or above. Cross NASAP at 5000 FT MSL or above.
DETIG 2B	From DETIG proceed on track 044°. At KNA DME 18 NM turn right on track 078°. Cross R-143 KNA, turn left on track 066° and proceed to IAF REGLU.	Cross KNA DME 18 NM at FL120 or above. Cross R-195 KNA at FL090 or above. Cross REGLU at 4000 FT MSL or above.
ELEKA 2B	From ELEKA on track 287° proceed to IAF REGLU.	Cross REGLU at 4000 FT MSL or above.
IKAMU 3B	From IKAMU on track 193° proceed to IAF NASAP.	Cross IKAMU at FL110 or above. Cross KNA DME 25 NM at FL080 or above. Cross NASAP at 5000 FT MSL or above.
PELUT 2B	From PELUT proceed on track 167°. At KNA DME 18.4 NM turn left on track 089° and proceed to IAF NASAP.	Cross R-318 KNA at FL110 or above. Cross NASAP at 5000 FT MSL or above.

RNAV STAR RWY 26 WAY POINT CODING (All segments – TF legs)

STAR NAME	ROUTE
AKUMA 2B (59.5 NM)	AKUMA - KA801[F110+] - IAF NASAP[A5000+;K230-]
DETIG 2B (46.4 NM)	DETIG - KA803[F120+;R] - KA804[F090+] - KA805[L] - IAF REGLU[A4000+;K230-]
ELEKA 2B (8.8 NM)	ELEKA - IAF REGLU[A4000+;K230-]
IKAMU 3B (16.7 NM)	IKAMU[F110+] - KA806[F080+] - IAF NASAP[A5000+;K230-]
PELUT 2B (46.6 NM)	PELUT - KA802[L] - KA801[F110+] - IAF NASAP[A5000+;K230-]

FOR DETAILED FLIGHT PROCEDURES REFER TO AIP EYKA AD 2.22

WAY POINT COORDINATES

KA801	55 07 29.2N 023 51 43.1E	KNA R317.8/D12.1	NASAP	55 04 57.2N 024 28 10.6E	KNA R055.2/D15.7
KA802	55 08 14.1N 023 40 24.6E	KNA R301.5/D17.2	PELUT	55 27 04.4N 023 36 37.1E	KNA R325.4/D33.4
KA803	54 47 28.1N 023 42 02.7E	KNA R224.6/D16.3	REGLU	54 51 37.2N 024 27 23.7E	KNA R107.0/D14.8
KA804	54 48 15.8N 023 57 22.5E	KNA R195.4/D10.1	KNA	54 57 37.4N 024 03 59.1E	
KA805	54 49 01.1N 024 12 35.3E	KNA R143.2/D10.0			
KA806	55 15 11.1N 024 34 40.9E	KNA R038.1/D24.9			
AKUMA	55 11 37.8N 022 45 10.6E	KNA R281.0/D47.4			
DETIG	54 35 00.8N 023 15 34.0E	KNA R224.6/D36.0			
ELEKA	54 48 01.6N 024 41 20.1E	KNA R107.0/D23.6			
IKAMU	55 20 40.3N 024 38 12.5E	KNA R033.3/D30.3			

THIS PAGE INTENTIONALLY LEFT BLANK